

WASTE WISE PRODUCTS INC.

Sustainable Furnishings



Our TYPE-A Material

When it comes to recycled HDPE (#2) plastic, purity makes a world of difference. The purity count in our TYPE-A Material drastically increases the long term performance of our products. At almost 100% pure it can be recycled a second time after the products useful life is over.

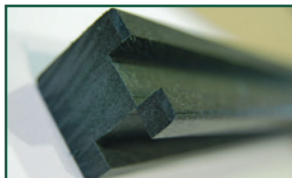
With nearly fourteen years of working with this material, we've come to this conclusion: Plastic's simply better. It's better than wood, concrete and steel. Our recycled plastic is color stable and it doesn't rust or crack. It's also environmentally friendly by diverting plastic from going to landfills and reducing our dependence on fossil fuels.

TYPE-A Material is impervious to insects and moisture, meaning it won't rot or splinter. Added UV inhibitors keep its colors stable while bonding agents create complete molecular linkage for optimum structural integrity.

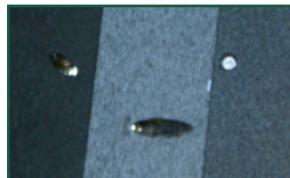


World Class Construction

With nearly fourteen years of applied experience in the industry, our factory has become experts in constructing furnishings made with recycled plastic. Waste Wise Products Inc. embodies the rigorous standards and sound construction methods that make our products built to last. Each of our furnishings has been carefully engineered for optimum material tolerances allowing for versatility, durability and longevity.



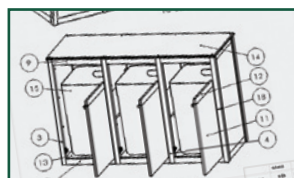
Dado Grooved
Posts



Pocket Screw
Joinery



Marine-Grade
Hardware



Fully Engineered



Built to Last

PARK BENCHES

100% Recycled Plastic Lumber



Econo-Mizer



Park Classic



Park Classic Without Back



Deluxe



Elite



Monarch



Monarch With Arms



Cambridge

PICNIC TABLES



Standard 6' Picnic Table



Deluxe 6' Picnic Table

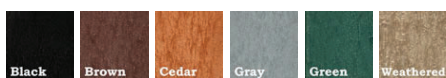
Completely maintenance free benches and picnic tables. The only metal utilized is the Marine-Grade stainless steel hardware.

Benches	Size	Weight
Econ-Mizer	4 Foot	85 lbs
	6 Foot	114 lbs
	8 Foot	169 lbs
Park Classic	6 Foot	131 lbs
	8 Foot	175 lbs
Park Classic Without Back	6 Foot	85 lbs
	8 Foot	113 lbs
Deluxe	4 Foot	871 lbs
	6 Foot	131 lbs
	8 Foot	175 lbs

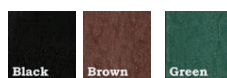
Benches	Size	Weight
Elite	4 Foot	113 lbs
	6 Foot	188 lbs
	8 Foot	226 lbs
Monarch	6 Foot	129 lbs
	8 Foot	172 lbs
Monarch With Arms	6 Foot	139 lbs
	8 Foot	182 lbs
Cambridge	6 Foot	109 lbs
	8 Foot	146 lbs

Picnic Tables	Size	Weight
Standard	6 Foot	320 lbs
	8 Foot	400 lbs
	Deluxe	6 Foot
	8 Foot	420 lbs

AVAILABLE COLOUR BOARD OPTIONS



AVAILABLE COLOUR BASE OPTIONS



PRINCETON



PR-1



PR-2



PR-3



PRT-1



PRT-2



PRT-3

Available in either two-tone combinations or solid colors. Units larger than 26 gallons include hinged door for ease of waste removal. All units include waste liner.

Vail Top Option
PR-V-3



Liner Size	Opening(s)	26 Gallon	32 Gallon	38 Gallon	45 Gallon	55 Gallon	Model Numbers
Single	Side Load	21"W x 21"D x 41"H	23"W x 21"D x 43"H	24"W x 24"D x 39"H	24"W x 24"D x 44"H	26"W x 24"D x 48"H	PRT-1-26 thru 55
	Top Load	21"W x 21"D x 34"H	23"W x 21"D x 36"H	24"W x 24"D x 36"H	21"W x 21"D x 36"H	26"W x 24"D x 44"H	PRT-1-26 thru 55
Double	Side Load	40"W x 21"D x 41"H	40"W x 21"D x 43"H	46"W x 24"D x 39"H	49"W x 25"D x 43"H	46"W x 24"D x 48"H	PRT-2-26 thru 55
	Top Load	40"W x 21"D x 34"H	40"W x 21"D x 36"H	46"W x 24"D x 36"H	49"W x 25"D x 36"H	46"W x 24"D x 44"H	PRT-2-26 thru 55
Triple	Side Load	60"W x 21"D x 41"H	60"W x 21"D x 43"H	68"W x 24"D x 39"H	72"W x 25"D x 43"H	68"W x 24"D x 48"H	PRT-3-26 thru 55
	Top Load	60"W x 21"D x 34"H	60"W x 21"D x 36"H	68"W x 24"D x 36"H	72"W x 25"D x 36"H	68"W x 24"D x 44"H	PRT-3-26 thru 55

AVAILABLE COLORS



PRINCETON SPLIT



PRSDS



PRSDT



PRSTS



PRSTT



PRSQS



PRSQT

Reduce your recycling containers foot print but not the number of compartments. When space is a concern our Princeton Split can add more compartments in the same amount of space as the Princeton. All units include waste liners.

Liner Size	Opening(s)	14 Gallon	16 Gallon	18 Gallon	22 Gallon	Model Numbers
Double	Side Load	N/A	N/A	24"W x 24"D x 39"H	24"W x 24"D x 44"H	PRSDT
	Top Load	N/A	N/A	24"W x 24"D x 35"H	24"W x 24"D x 40"H	PRSDS
Triple	Side Load	24"W x 24"D x 40"H	24"W x 24"D x 44"H	N/A	N/A	PRSTT
	Top Load	24"W x 24"D x 35"H	24"W x 24"D x 40"H	N/A	N/A	PRSTS
Quad	Side Load	N/A	N/A	46"W x 24"D x 39"H	46"W x 34"D x 44"H	PRSQT
	Top Load	N/A	N/A	46"W x 24"D x 35"H	46"W x 34"D x 40"H	PRSQS

AVAILABLE COLORS



CAMBRIDGE



CAM-2



CAM-3



CAM-4



CAM-5

The Cambridge includes: a rigid plastic liner, stainless steel finger pulls, front doors for ease of emptying and opening ID labels. Backboards are sold separately.

Liner Size	Opening(s)	23 Gallon	Model	Backboard	Model
Single	Top Load	14"W x 25"D x 35"H	CAM-1	14"W x 25"D x 58"H	CAM-1-BB
Double	Top Load	27"W x 25"D x 40"H	CAM-2	27"W x 25"D x 58"H	CAM-2-BB
Triple	Top Load	40"W x 25"D x 40"H	CAM-3	40"W x 25"D x 58"H	CAM-3-BB
Quad	Top Load	52"W x 25"D x 40"H	CAM-4	52"W x 25"D x 58"H	CAM-4-BB
Quin	Top Load	75"W x 25"D x 35"H	CAM-5	75"W x 25"D x 58"H	CAM-5-BB

AVAILABLE COLORS



Our Collections

Our two distinct **TYPE** product lines, ST and SL, combine form without skimping on functionality. The ST Collection is simply stated and gets the job done. The elegant SL product line fills a slightly larger profile, and can be customized with multiple color combinations in part to the breadboard design. Each collection has two panel options as well: Plain or Bead Board panels. Plain panels provide a clean, modern look while still serving the core purpose of the product. Uniquely extruded Bead Board panels can easily add to any customers' decor and image.



ST Plain Panel



SL Plain Panel



ST Bead Board Panel



SL Bead Board Panel

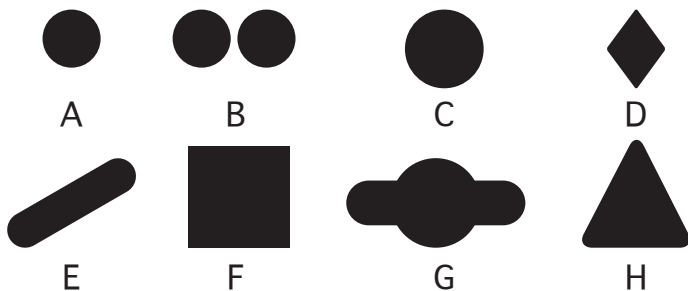
POSTER OPTIONS

Also available in bilingual.



Create awareness and recognition of your initiatives with custom posters, recycle symbols and even your own logo.

RESTRICTIVE OPENINGS



OPENING ID OPTIONS



Customize the decal color to match your units.



- A. 4" circle (mainly used for cans)
- B. Two 4" circles (mainly used for cans)
- C. One 6" circle (mainly used for plastic bottles)
- D. 6" x 8" diamond (mainly used for commingle)
- E. 3" x 12" slot (mainly used for paper)
- F. 8" square (mainly used for waste)
- G. Commingle slot (paper/bottles/cans)
- H. 8" x 8" triangle (mainly used for commingle)
- I. Hinged lids 8" square (mainly used for organics/compost)
- J. Custom opening shapes available as a special order

Contact Us:

WASTE WISE PRODUCTS INC.
689 Warden Ave., Suite 14
Toronto, Ontario M1L 4R6

T: 416-686-6816
F: 416-698-4287
Toll Free: 1-877-680-8361
E: info@wastewiseproducts.com